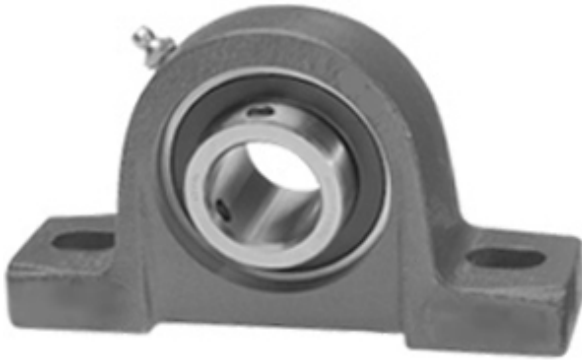




NTN Bearing Brazil Bearings Ltda.

1.688 Inch | 42.875 Millimeter x 1.937 Inch | 49.2
Millimeter x 2.125 Inch | 53.98 Millimeter IPTCI
UCP 209 27 Pillow Block Bearings



UCP 209 27 Bearing 2D drawings and 3D CAD models

Bearing No. UCP 209 27

Category	Pillow Block Bearings
Inventory	6.0
Manufacturer Name	IPTCI BEARINGS
Minimum Buy Quantity	N/A
Weight	2.585
Product Group	M06110
Number of Mounting Holes	2
Mounting Method	Set Screw
Housing Style	2 Bolt Pillow Block
Rolling Element	Ball Bearing
Housing Material	Cast Iron
Expansion / Non-expansion	Non-expansion
Mounting Bolts	1/2 Inch
Relubricatable	Yes
Insert Part Number	UC209-27
Seals	B Seal
Housing Configuration	1 Piece Solid
Inch - Metric	Inch
Other Features	Single Row Standard Duty Wide Inner Race High Base
Long Description	2 Bolt Pillow Block; 1-11/16" Bore; 2-1/8" Base to Center Height; Set Screw Mount; Ball Bearing; Relubricatable; Cast Iron; B Seal; Non-expansion



NTN Bearing Brazil Bearings Ltda.

Category	Pillow Block
UNSPSC	31171511
Harmonized Tariff Code	8483.20.40.40
Noun	Bearing
Keyword String	Pillow Block
Manufacturer URL	http://www.iptci.com
Manufacturer Item Number	UCP 209 27
Weight / LBS	5.7
d	1.688 Inch 42.875 Millimeter
Bolt Spacing Minimum	0 Inch 0Millimeter
D	1.937 Inch 49.2 Millimeter
B	2.125 Inch 53.98 Millimeter
Actual Bolt Center to Center	5.8 Inch 146.1Millimeter
Nominal Bolt Center to Center	5.8 Inch 146.5 Millimeter
Bolt Spacing Maximum	0 Inch 0Millimeter