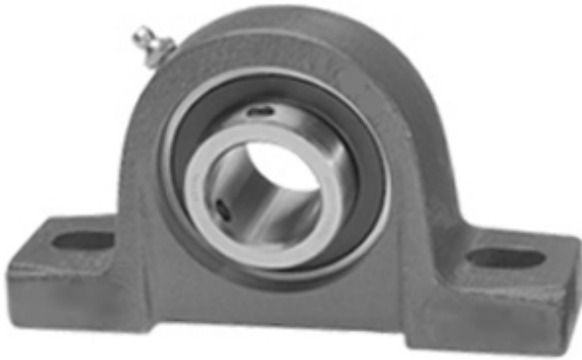




NTN Bearing Brazil Bearings Ltda.

1.5 Inch | 38.1 Millimeter x 1.937 Inch | 49.2
 Millimeter x 1.938 Inch | 49.225 Millimeter IPTCI
 UCP 208 24 L3 Pillow Block Bearings



Bearing No. UCP 208 24 L3

UCP 208 24 L3 Bearing 2D drawings and 3D CAD models

Category	Pillow Block Bearings
Inventory	4.0
Manufacturer Name	IPTCI BEARINGS
Minimum Buy Quantity	N/A
Weight	2.267
Product Group	M06110
Number of Mounting Holes	2
Mounting Method	Set Screw
Housing Style	2 Bolt Pillow Block
Rolling Element	Ball Bearing
Housing Material	Cast Iron
Expansion / Non-expansion	Non-expansion
Mounting Bolts	1/2 Inch
Relubricatable	Yes
Insert Part Number	UC208-24
Seals	L3 Seal
Housing Configuration	1 Piece Solid
Inch - Metric	Inch
Other Features	Single Row Standard Duty Wide Inner Race High Base
Long Description	2 Bolt Pillow Block; 1-1/2" Bore; 1-15/16" Base to Center Height; Set Screw Mount; Ball Bearing; Relubricatable; Cast Iron; L3 Seal; Non-expansion



NTN Bearing Brazil Bearings Ltda.

Category	Pillow Block
UNSPSC	31171511
Harmonized Tariff Code	8483.20.40.40
Noun	Bearing
Keyword String	Pillow Block
Manufacturer URL	http://www.iptci.com
Manufacturer Item Number	UCP 208 24 L3
Weight / LBS	5
Actual Bolt Center to Center	5.4 Inch 136Millimeter
Bolt Spacing Minimum	0 Inch 0Millimeter
D	1.937 Inch 49.2 Millimeter
Bolt Spacing Maximum	0 Inch 0Millimeter
B	1.938 Inch 49.225 Millimeter
d	1.5 Inch 38.1 Millimeter
Nominal Bolt Center to Center	5.4 Inch 136 Millimeter